

TYPE GTT

Features

- Manufactured from high strength 6061-T6 aluminum alloy
- Electro-tin plated
- UL Listed and CSA Certified for 600, 90° C
- Compact design
- Range taking
- Re-usable
- Lay-in main conductor
- Insulating cover available

Benefits

- Suitable for use with either copper or aluminum conductors
- Provides low contact resistance
- Ensures reliability for copper or aluminum conductors
- Saves space and reduces installation time
- Permits inventories to be kept to a minimum
- Provides efficient use and flexibility in the field
- No need to break the feeder cable
- Eliminates taping

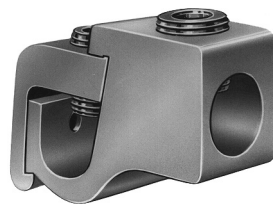
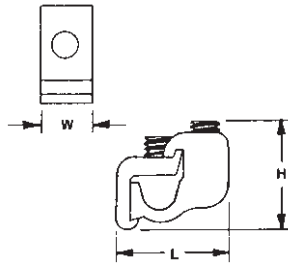


Fig. 1

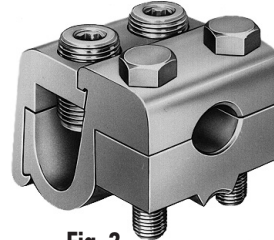
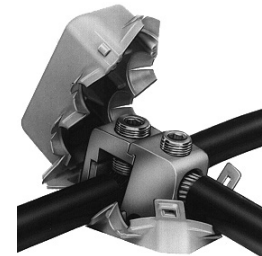


Fig. 2



Catalog Number	Figure Number	Wire Range		Dimensions			Hex Size	
		Main	Tap	L	W	H	Main	Tap
GTT-2-2	1	2-12 str	2-12 AL 2-14 CU	1-1/4	9/16	1	Slot	Slot
GTT-0-0	1	1/0-2	1/0-12 AL 1/0-14 CU	1-9/16	3/4	1-1/8	Slot	Slot
GTT-250-0	1	250kcmil-1/0	1/0-12 AL 1/0-14 CU	2	7/8	1-7/16	5/16	Slot
GTT-250-250	1	250kcmil-1/0	250kcmil-6	2-1/8	7/8	1-7/16	5/16	5/16
GTT-350-350	1	350kcmil-4/0	350kcmil-6	2-7/16	1	1-11/16	3/8	3/8
GTT-500-500	1	500kcmil-350kcmil	500kcmil-2	2-15/16	1-1/4	2	3/8	3/8
GTT-750-500	1	750kcmil-500kcmil	500kcmil-2	3-3/8	1-1/4	2-7/16	3/8	3/8
GTT-750-750	2	750kcmil-500kcmil	750kcmil-600kcmil	3-3/8	2-3/8	2-7/16	1/2	EH 3/4

Note: If ordering with cover, add suffix W/C to catalog number.

All wire sizes, unless noted otherwise, are American Wire Gauge (AWG)

EH-External Hex

Insulating covers are available for most connector sizes.

See page 148 for additional information on covers

DE-OX Inhibitor is recommended for all aluminum terminations.

Tested to UL 486A/B, UL File E6207